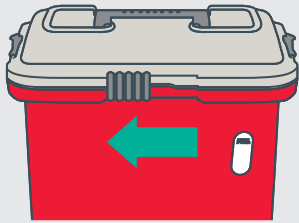


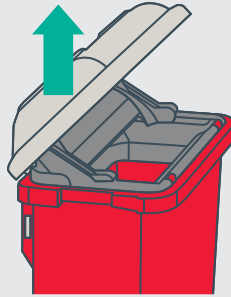
Sharpsmart

ACCESS PLUS | INSTRUCTIONS FOR USE

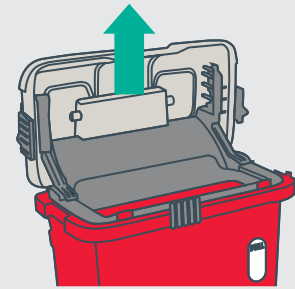
TO OPEN



1 Slide the front lock to the left

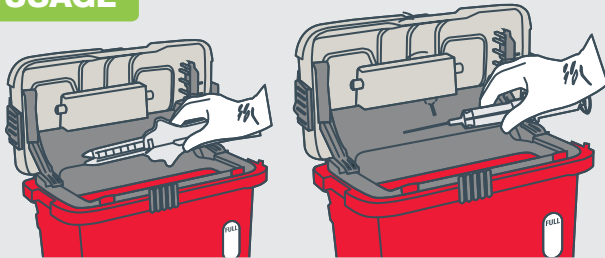


2 Lift lid to 45 degrees for semi-access opening



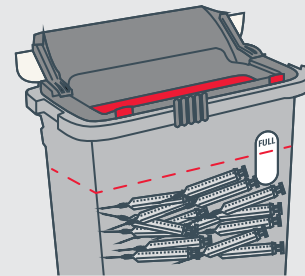
3 Lift lid to 90° for full access opening

USAGE



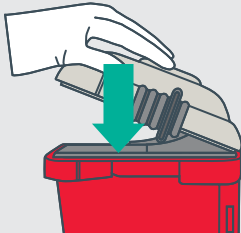
Drop items pointing downwards into opening

FULL

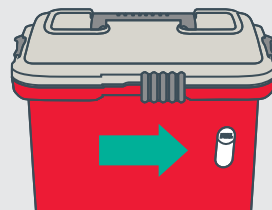


When sharps reach fill level, Access Plus collector is full and must be locked and replaced.

CLOSE

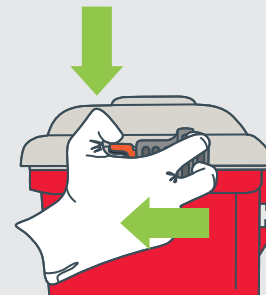


1 Press lid down firmly.



2 Slide the front lock fully to the right.

LOCK



1 Depress red tabs.

2 Slide locks completely forward.

PLEASE NOTE
Side locks are permanent!

Remember

- Never put your hands into a sharps collector.
- Always close the collector before moving or removing container.
- Do not deface or write on the collector.
- Always dispose of sharps and sharps safety devices into sharps collectors.