



**Stony Brook University and the Institute for Advanced Computational Science invite students to take part in STRIDE: Science Training and Research to Inform DEcisions.**

Within all sectors of industry and government, effective decision making depends on the ability of scientists to interpret data and communicate results in a way that supports the decision-making process. Learn how to communicate your research to the policy makers; understand the perspectives of stakeholders; and translate scientific uncertainty into action.

# STRIDE

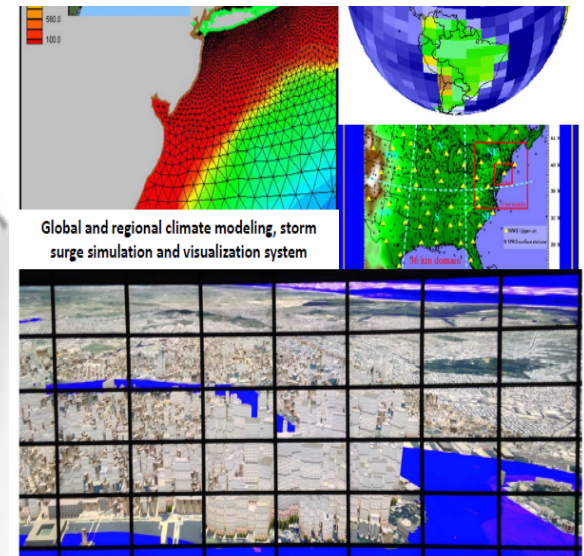
Science Training and Research to Inform DEcisions

# Science Training & Research to Inform DEcisions (STRIDE)



“data-focused” skills:

- modeling
- statistics
- computation
- visualization



Decision-making requires a rapid response ► Need experts that straddle the traditional divide between data-science and policy

# Science Training & Research to Inform DEcisions (STRIDE)

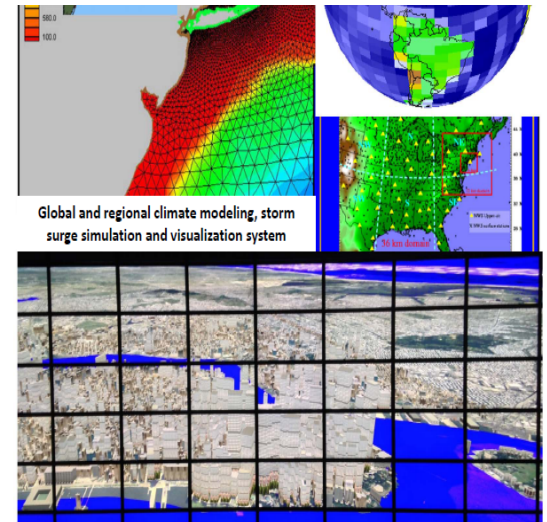
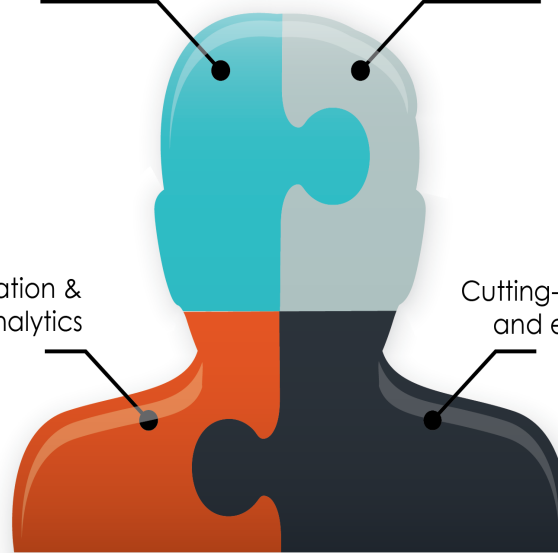


Understanding decision  
maker requirements

Science communication

Visualization &  
Data analytics

Cutting-edge science  
and engineering



## Vertically-integrated graduate training:

- Connects scientific and computational research to decision support
- Preparation for high-impact careers (academic, industrial, government, and non-profit settings)
- Connects science to real-world applications

# Research Themes



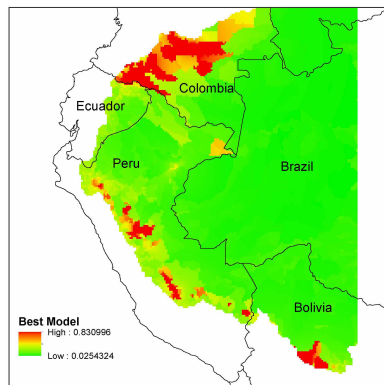
Climate Change and Coastal Resilience



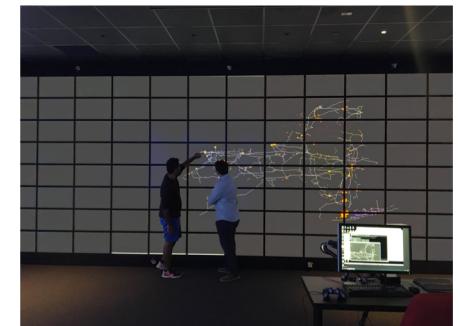
Marine Resource Management



Tracking and Targeting  
Illegal Deforestation



Powering the  
Smart Grid  
Through Data  
Infrastructure





# Departments

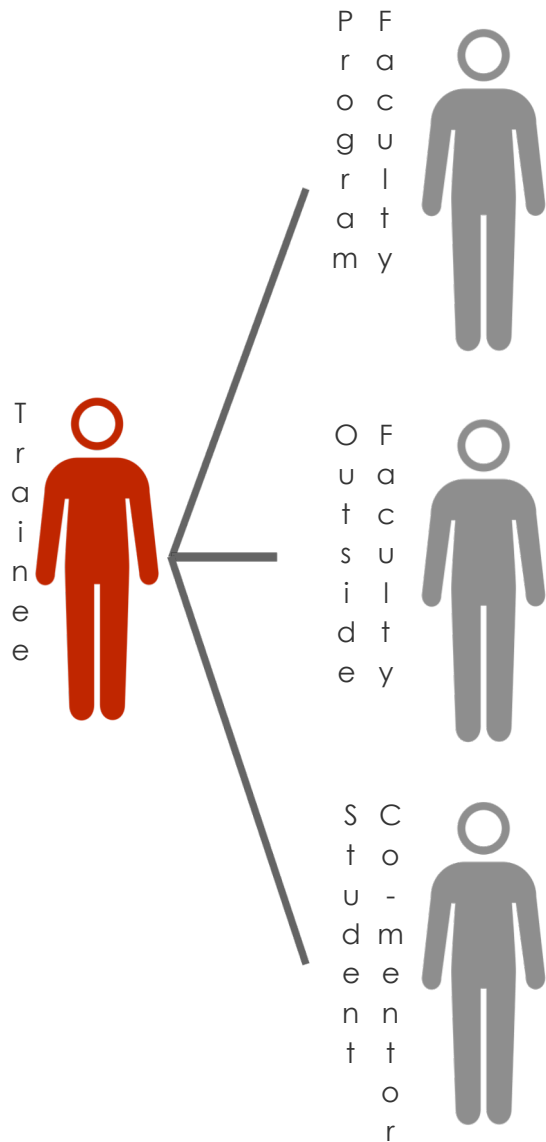
- Applied Math & Statistics
- Biomedical Informatics
- Computer Science
- Ecology & Evolution
- Electrical & Computer Engineering
- Journalism
- Marine and Atmospheric Sciences
- Public Health (pending)
- Technology & Society



# Internship Partners

- National Oceanic & Atmospheric Administration (NOAA)
- Antarctic Southern Ocean Coalition (ASOC)
- Brookhaven National Laboratory (BNL)

# STRIDE Mentoring Model



- Research Advisor
- Referral to appropriate resources

- STRIDE Mentor
- Guiding research progress
- Connecting student with career appropriate academic networks

- Peer Mentoring
- Conduit for connecting student to STRIDE specific resources and networks
- Communication and decision support

# STRIDE Fellowships

Domestic STRIDE trainees working with participating faculty are eligible for a limited number of paid fellowships:

- Stipend of \$34K
- Tuition, health insurance fully covered
- \$200/year for books



# STRIDE Internships

- Internships are available to all STRIDE trainees
- National Oceanic & Atmospheric Administration, Antarctic and Southern Ocean Coalition, Brookhaven National Laboratory, etc.
- Fully funded by STRIDE
- Internships will run 6-8 weeks

# Seminars

- STRIDE-Con
- Many Paths to Science
- Monthly Brown Bag Lunches
- Data-visualization contest

